

EDGE

a SIX Telekurs display

Quick guide Edge 4.0

Welcome to Edge 4.0!	3
The Edge 4.0 features in short	4
Releasenotes Edge 4.0	5
Main menu	6
Open a page	6
My Edge	7
Edge Menu	8
Change Settings	8
Library	8
Other Functions	9
Bookmarks	9
Instrument search	9
Page construction	10
Building with a finished page as basis	10
Building a new page	11
Linking	11
Saving a page	11
Right click...	12
...in a window	12
...in a column headline	13
... in a window frame	13
News	14
Charts	15
Time periods, tick length and zoom	15
Instrument specific settings	16
More chart tools	17
Advanced functions	18-24
Order entry	*** See separate guide

Welcome to Edge 4.0!

Edge is a modern and powerful financial market information and trading tool for professionals and active private investors. With real-time data from regional and major exchanges, price-moving news and in-depth research from local and global sources, company data with earnings estimates and charting with over 30 years of price history, Edge will give you the complete market view.

Edge is offered in a set of packages, shaped around the needs of the front and middle office.



This guide will help you to get started with Edge. Should you need more information or support, SIX Telekurs provides training for single users or groups at no additional cost.

Please contact SIX Telekurs Customer Services if you have questions about the content of this document, or if you want to book a training course. Contact information can be found at the bottom of each page.

Edge 4.0 highlights

- New main menu combining overview and details for fast and intuitive access to the information you need.
- Now even faster – takes full advantage of your computer’s performance.
- Extended history and instrument access. More than 32 years of history.
- Menu widgets allow a lucid monitoring of specific shares or instruments through drag-and-drop.
- My Edge – a single space for all user defined pages, lists, alarms and templates.
- Edge now keeps track of your most commonly used and recently closed pages and for easy and instant access.
- Trading buttons and shortcuts in quote lists, news lists and order books.
- Comprehensive content and in-depth company information (additional service).
- SIX Estimates provides early indications of trends and estimates where contributors can compare their estimates to consensus (additional service).
- Inquiry Financial: Nordic and European estimates. More than 650 companies, with detailed consensus broken down by division level.
- Infinancials Corporate Focus: A powerful company screening tool with fundamentals, estimates and risk metrics for more than 70 000 companies from around the world (additional service).
- Excel link both in real time and snapshot, available through drag-and-drop or through export of own portfolios or lists.
- Easy set-up through automatic and central management of communication profiles.

Release notes Edge 4.0

New main menu	New and accessible main menu makes it easy and intuitive to build new and modify existing pages.
Menu widgets	A panel with four cells has been added to the right corner of the main menu. These are populated by dragging and dropping the instrument you want to monitor there. Settings are available to make them alternate between last paid, change and percent change or time.
New page tab design and functionality	The page tabs have been redesigned to more resemble web browser tabs. The page tabs are easy to rearrange by dragging and dropping them on the tab list.
Trading orientation	First time users will be asked if they want trading features enabled or not. If so, a number of user settings and shortcuts will be set to make Edge more trading oriented.
Own portfolio names	In the FX Forwards view a check box has been added which calculates theoretical forward prices when no contributed prices are available.
Improved drawing function in charts	It is now possible to add a blank space to draw lines ahead of the chart, both horizontally and vertically. Also, a trend line will continue to grow over time.
Trading buttons	In stock lists and news views, Buy/Sell buttons are now available. These buttons can be added or removed through Edit settings -> Shortcuts.
Save instrument list configuration	It is now possible to save settings for column changes and instrument lists as different templates.
Copy news headlines	With the keys [Ctrl-C], you can now copy a news article headline to the clipboard.
News attachments	If a news article contains one or more attachments, they will appear in tabs in the article. The attachment reader also provides a search function.
Infinancials GPRV	A light-weight version of Infinancials Corporate Focus, which gives you access to Infinancials GPRV's chart for company valuation and comparison.
Optimized bandwidth usage	With more efficient data management.
Automatic configuration of communication profiles	Easy set-up through automatic and central management of communication profiles.

Customer Services Nordic

5

Denmark

Finland

Norway

Sweden

+45 33 411141

+358 207 334044

+47 23 326629

+46 8 58616400

support@six-telekurs.dk

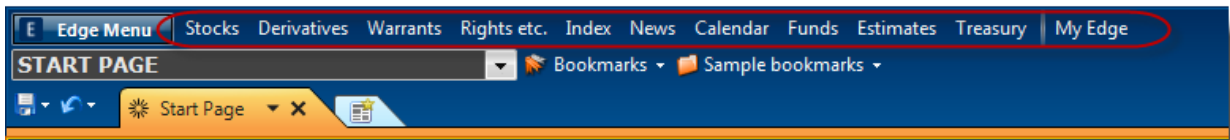
support@six-telekurs.fi

support@six-telekurs.no

support@six-telekurs.se

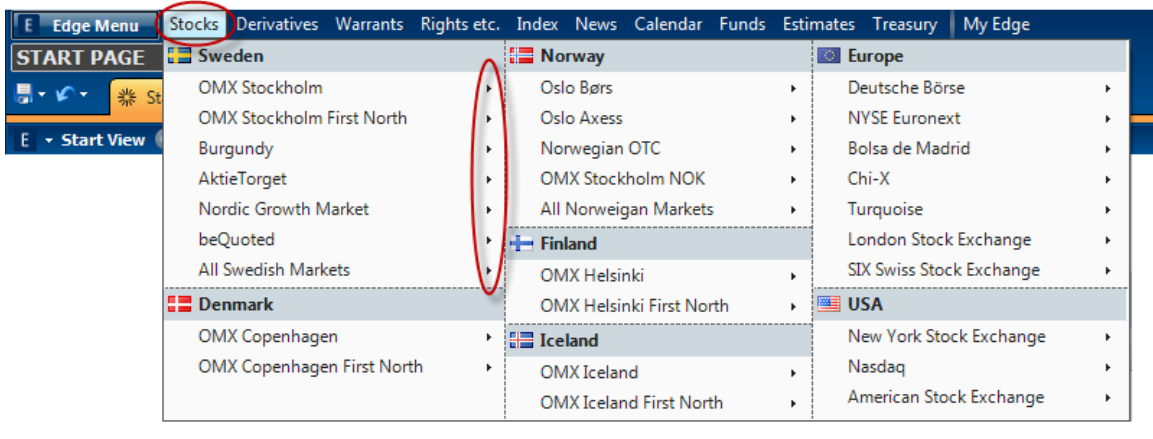
Main menu

Edge 4.0 has a new and easily accessible main menu that gives instant access to market data, company data, estimates and news. To open a new page, just select one from the menu.

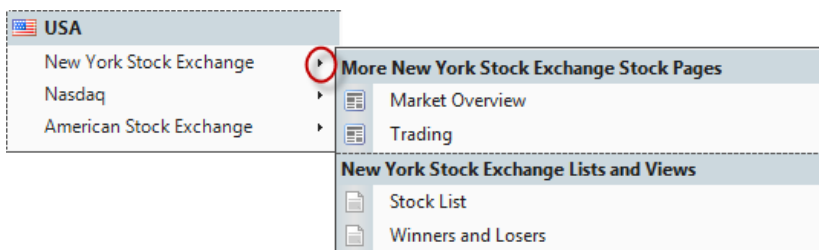


Open a page

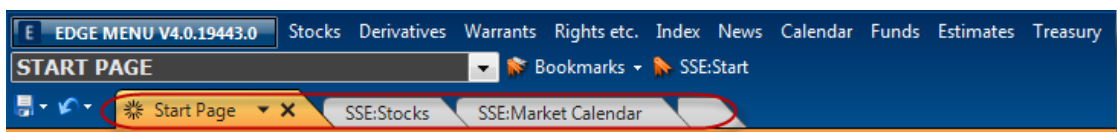
Click on the instrument class that you want to start from. This opens a menu with a breakdown by country and market. By clicking on the market name (e.g. OMX Stockholm), the default page for that market will open on your desktop.



You can also pick up other views by clicking the black arrow to the right of the selected market. This displays a submenu with the relevant pages and lists for the selected market.

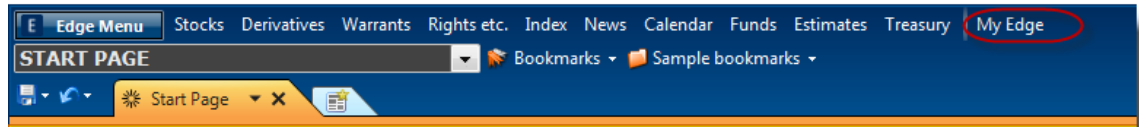


Open pages will appear as tabs in the main window as shown below. You can easily switch between these tabs. Note the **Start Page**, which in this case is the selected, active tab






My Edge

This function is located to the right of the main menu options and works as a gathering place for your user defined lists, pages and alarms.



Manage My Lists

With this function it is easy to create user defined lists, with favorite shares or holdings, indices, currencies or indicators. When you create a new list, a new blank instrument list will open up. Just drag and drop the instrument you want to include in the list. If you cannot find an instrument that should be included in the list, you can search for it by clicking the icon  in the same window. You can also view your instrument lists as a bar chart by clicking the icon  on the selected list. Through  it is possible to add portfolios with AVP, number of shares/instruments, purchase dates, etc.

My Lists

This is where you collect your own lists. These are easy to open using left click.

Manage My Pages

A function to create and edit custom built pages. A page can easily be saved as a Page Template, which then can be applied to any market, see below.

My Pages

This is where you find your custom built pages. They are opened by left click.

My Pages Templates

This section lists your user defined Page Templates. Page templates can, unlike custom built pages, be applied to different markets.

For more information regarding page construction production, please go to page 10.


Manage Alarms

This feature provides a consolidated view of all alarms. Through this you can add and remove alarms as well as enable/disable them.

Create Alarms

From here you can easily create your own stop-loss, quote and news alerts. It is also possible to add your own titles and texts in the alarm, and assign them specific alarm sounds.

Edge Menu

At the top left of the Edge is , a collection of functions for system settings, support and system information.

Settings

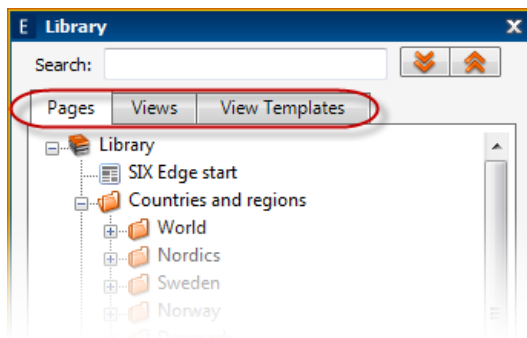
In the settings box, you can do the following:

- **Pages:** Set the number of pages (tabs) that can be open parallely.
- **Environment:** Server addresses (not changed), and change of password.
- **Appearance:** Colour settings, font and font size.
- **RSS:** News download from Internet sources. See the **Advanced Features** section on p. 22.
- **Virtual Markets:** Merge marketplaces and stock exchanges in the same stock list – a so called "virtual market". See the **Advanced Features** section on p. 18.
- **Order Management:** Order settings. Server settings, limits, alarms etc (*additional function*).
- **Shortcuts:** Settings for double click and keyboard shortcuts.
- **Widgets:** Settings for Widgets. They can be found at the top right in the Edge application. Your Widgets can either be connected to specific instruments, or illustrate the time for various time zones.
- **Advanced:** Setting for CPU acceleration and AntiAliasing for all text.

Library

[Ctrl + L]

The library contains all standard pages and views organized by region and asset class. You can always go to the Library to find a page if you are unsure of how to use the **Top View** to find pages. You can open individual windows divided by market – for example a stock list for the Stockholm Stock Exchange. You can also download blank windows that have no predefined information content.



Pages

Standard pages divided by region, asset class and market..

Views

Individual windows with predefined content presented by market.

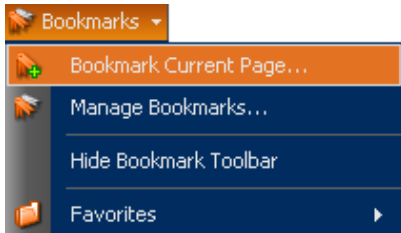
View Templates

Individual windows without predefined content.

Other functions

Bookmarks

Bookmark your favorite pages to be able to reach them quickly. Link one of the F keys to the bookmarks for even faster action.



When you select **Bookmark Current Page**, a box will appear where you can choose where to place your bookmark. Click **Favourites** to select the right folder and press OK. Your bookmark will now be visible in the main menu. You can also drag and drop an active page to the list of bookmarks.

Search

[Ctrl +F]

In the search field, you can search all the instruments of the SIX Telekurs database. You can search by ticker, name, ISIN or various abbreviations. Asterisk ("*") is used as wildcard character in search strings. E.g. the search string eric*call*jan will yield a result with call options for Ericsson with expiry month January.



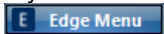
Page building

The work space in Edge 4.0 consists of pages with free floating windows with "sticky" edges that easily snap in place to each other. This makes it easy to expand an existing page – either open up the windows you want to use through the library or access them by right-click and place them as you wish.

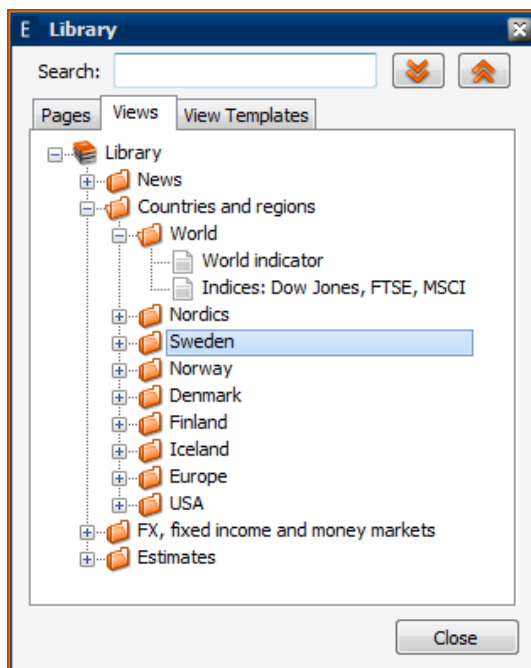
Once you have built your page, you can save it as a template and use it to work on all markets. See the section "Saving a page" below.

Building with an existing page as basis

If you want to use one of the finished pages as basis for your own page, click the icon

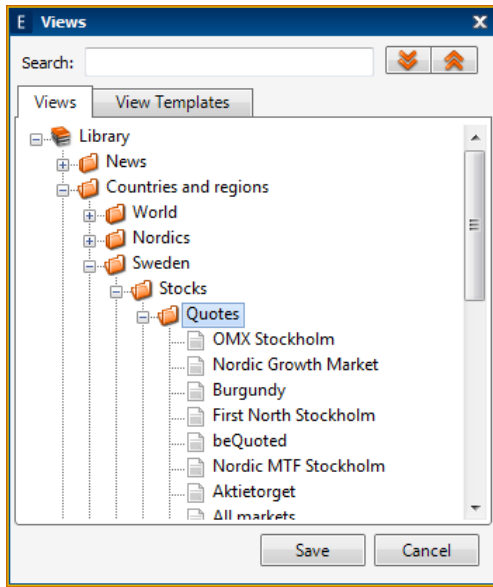


Additional items to your page can be found under the **View Templates** tab. Learn more about linking and how to save pages on the next page.



Building a new page

If you want to build a page from scratch, click the icon in the main menu and select **Create New Page Template**. A box from the library will open up where you can start selecting the content of your page.



Apart from this, the page building works in the same way as in the case above, when you continue building an existing page.

Linking

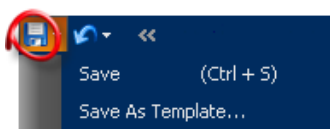
Link your new windows with for example the stock list by clicking the link icon at the top bar of the new window. Choose for example **SSE: Stock List**. You can see which window you have linked to when its top bar turns orange.

Please note that you can link a window to various sources.



Saving a page

When the new windows have been arranged and linked, click the **Save** icon at the top of the main menu. In the new menu that opens up, select **Save As Template**, and name the new page.



If you choose the option **Save** in this menu, your change will be saved *for this market only*. This can be useful if for example different order books should be open in different markets.






Right-click...

Throughout Edge, you can navigate with right-click. Each window contains settings or additional information that you will access through the right-click context menu. You can choose your settings by right-clicking in the title bar of the windows on your page. Read more about this below.

...in a window

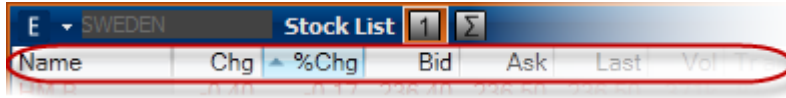
If you right-click on an instrument for example in the stock list, a menu will open up that gives you access to almost all information available in Edge. This information is available both on company and market level. Here you have access to various methods for viewing and handling market information, pages, alarms, instrument lists and table settings and other features.

See below for a presentation of the most common options under right-click.

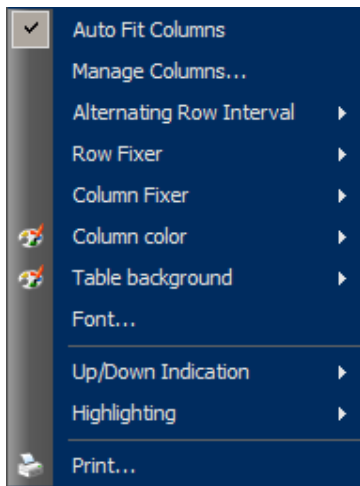
 Chart	▶	Predefined chart templates including popular technical analysis studies.
Trading	▶	Order books, trade tickers, VWAP, portfolio with holdings.
 Broker statistics	▶	Market statistics and broker statistics.
 News	▶	Company specific news.
Derivatives	▶	Options, option simulator and warrants.
 Performance	▶	Stock performance, turnover on selected market, winners/losers.
Estimates	▶	Inquiry Estimates, SIX Estimates for quarter and year..
 Information	▶	Infionals Corporate Focus, SIX Company Information.
Index	▶	Market index, sector members, index constituents.
Bonds & rights	▶	Bonds, premium bonds, rights and convertible bonds.
FX & MM	▶	Currency quotes, currency index, interest rates.
Funds	▶	Funds and TF – Funds.
International	▶	Cross-market indicators.

*Please note that most of the window you open by right click in the stock list can be inserted and saved on your page. See the previous section **Page construction** for more information on this.*

.. in a column heading



Right-clicking on any column heading in one instrument or stock list (see above), allows you to access the following menu, which can be used to change the colour, appearance, or present which columns should be available, and in what order they will be illustrated.



Through **Manage Columns...** visible columns and the order of them is changed.

Column color and **Table background** provide functions to change the color grading and color scheme in selected shares or instruments list.


...in a window frame



If you right-click in a frame, you can among other things open a copy of the existing window (**Duplicate**), set a font, save your list settings as a template in the library, and export to Excel. You can also reset default settings through the **Restore defaults** option.

News

As a default setting, all news sources you have access to are shown in the news window. It is possible to filter the news feed via the input box at the top left of the news window.

Click in the input box and write for example the ticker code for a company to filter the news for that specific company. You can add several filters, such as news sources, topics or sectors. A list of possible filters is available under the icon . In the image below, a filter is set to display news from SIX News.



In the News window, there is a calendar to search for historical news. It can easily be reached by writing **Calender** in the text bar. Other examples of filters are **Macro** for relevant Macro news, **Estimates** for SIX Estimates mailings regarding estimates data, and **Flash** to pick out flash news and result flashes.

Charts

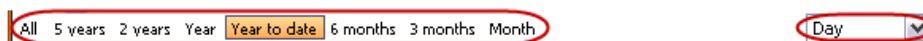
Edge has a powerful and flexible chart tool, where you can make easy comparisons between instruments, apply technical studies, draw or see news or report dates. You can make simple comparisons between instruments by dragging and dropping them onto the graph.

In the image below, four areas in the chart are marked with red. There you will find settings or menus for working with the chart tool.



Time periods, tick length and zoom

At the bottom of the chart, there are a number of predefined time periods. They vary depending on which frequency that has been selected in the scroll menu to the right. The menu lets you switch between intraday and historical charts by changing the frequency to for example Tick or Minute. You can also select a longer update periods, such as Month or Year.

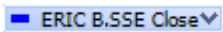


Zoom to specific periods in the chart by holding the left mouse button down while measuring out the time period you are interested in. You can see the dates at the lower edge when you roll over the graph.

Via **Custom ...** it is also possible to tailor the chart scale so that there is room in front of and above/below the chart line to draw trend lines and analyze direction. This feature also makes it possible to precisely specify the time periods.

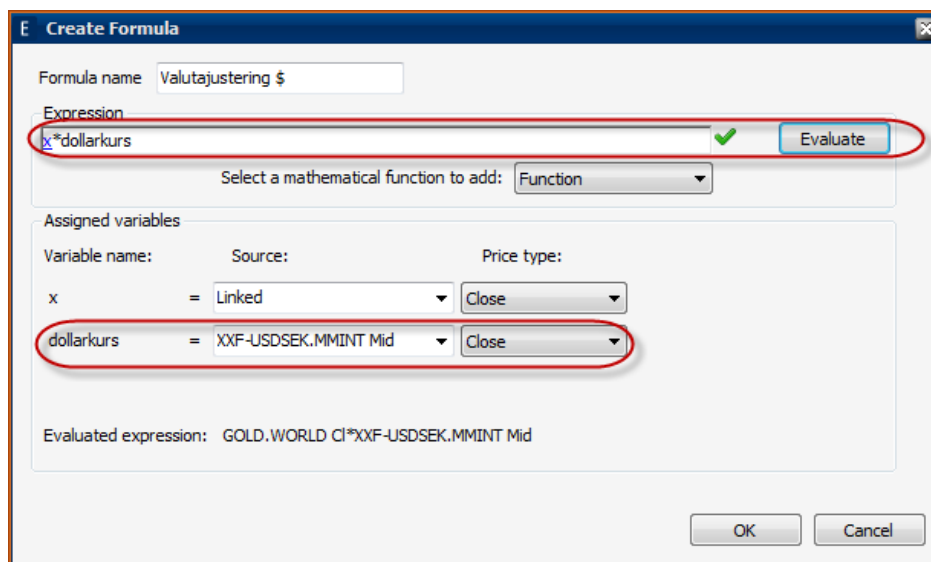
Instrument specific settings

Each instrument shown in the chart has its own menu where you can change colours, chart type and additional information on the instrument such as reports, highest/lowest rates etc.



Please note the option **Scale mode**. There you can choose whether the scale should be logarithmic or if you want the instrument in conjunction *not* be indexed against each other with the **Linear** option.

The option **Formulas** allows you to create your own calculations based on the time series of Edge. Write your expression in the Expression field and press **Evaluate**. You can then assign the instrument to your variables either by dragging and dropping from the tables in Edge to the **Source** field, or search by typing the name of the instrument in that field. In the example below, the gold price is currency adjusted gold price to the dollar rate.



In this case, the variable x is linked to the main instrument in the graph so that the formula can be applied to other instruments. The results are presented as a new time series in the graph. This can be moved to a new panel through the menu option **Move to new panel**.

More chart tools

The top of the chart displays a list with instrument information. Behind it is a menu with more tools to work with the chart. They appear if you move the mouse pointer upwards on the chart.



Search instruments to add to the chart.



Advanced settings to determine how the information should be presented.



Draw trend lines with alarms that go off if the chart crosses the line. *(Opens a new menu of options at the top of the chart.)*



Drawing tools for technical analysis. *(Opens a new menu of options at the top of the chart.)*



Resets advanced settings.



Switch chart content to table mode for exports to Excel, for example.



Print the chart.



Preview the printout.



Link the chart to one or more instrument lists.

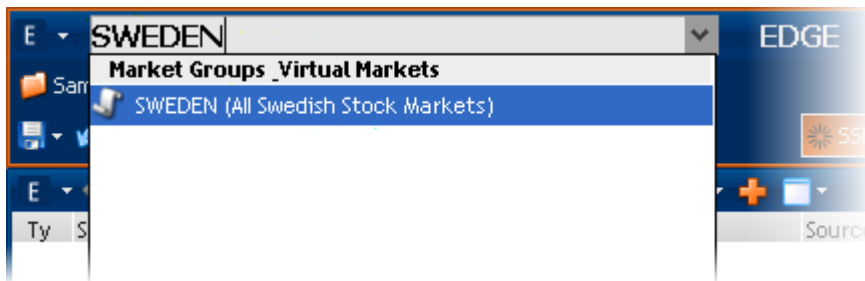
Advanced functions

This section is intended to demonstrate a number of useful functions for you who wish to utilize the full capacity and flexibility of Edge 4.0.

Virtual markets


In Edge you can merge various market places into one stock list. This will give you instant access to all the instruments from the selected market places added to the stock list.

There is a predefined virtual market that includes the Swedish stock exchanges. You can access it by writing **SWEDEN** in the Top View field. (See page 7.) A list of pages that you can apply to your virtual market will appear.



You can create your own virtual market by going to **Settings** (see page 11) and clicking **Add** under the **Virtual Markets** tab. Give your market a name and a description. Tick the markets you want to include and click OK. Access your virtual market in the same way as the market **SWEDEN** above.

Aggregated stock lists

In Edge, it is possible to aggregate prices from different markets in a single stock list. It is also possible to expand the underlying instrument to obtain bid and ask prices from all markets. This offers an unprecedented overview of how the individual instruments are traded on a large number of markets simultaneously. To view an aggregated stock list, click the icon  in the stock list.

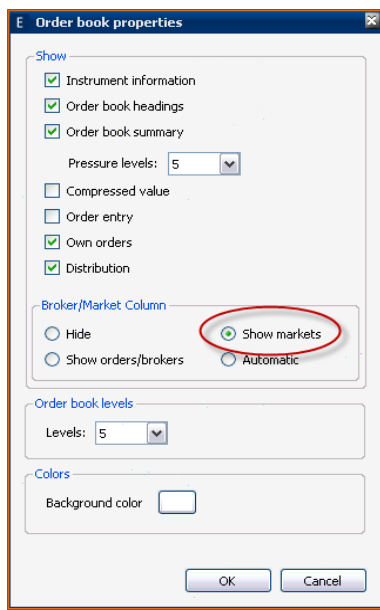
See below how the aggregated stocks list is illustrated in Edge.

Name	Chg	%Chg	Bid	Ask	Last	Mkt
▶ AAK*	-0,33...	-0,19	177,50	178,50	178,00	BURG
▲ ABB*	4,075	2,93	143,00	143,20	143,10	BURG
ABB	4,30	3,10	143,00	143,20	143,20	SSE
ABB	4,00	2,88	143,00	143,20	143,10	TRQX
ABB	4,00	2,88	143,00	143,20	143,10	CHI-X
ABB SEK	4,20	3,02	143,00	143,20	143,20	BURG
▶ ACAN B*	-0,075	-0,64	11,70	11,75	11,70	BURG
▶ ACAP A*	-	-	50,00	55,00	-	BURG

Aggregated order book

For instruments traded in different markets, you can get the volumes for the different markets in one single order book, given that it is the *same instrument* and that the currency is the same. There are various options in the order book on how to present this. (See next page.)

To see volumes in the different markets, right-click in the order book, and select **Properties**. In the box that opens up, tick the box **Show markets**.



Use the three icons at the top of the order book to choose between **Single**, **Consolidated** or **Aggregated** order book. In the image below, the consolidated order book has been selected. The volumes for each price level on each market are now displayed next to each other in the order book.



Consolidated and aggregated order books also show order book volume available on the various trading sites. In this case, 69 % of visible volume is on Nasdaq OMX (SSE), 22 % is Burgundy, and so on.

Window-in-window (Docking)

In order to save space while keeping related information together, you can dock various objects such as instrument lists, order books or charts to each other in a window. Press [Shift] while holding down the left mouse button and drag a window over another. An icon will appear in the middle of the window. Hover your mouse pointer over the icon and release the mouse button to add the item as a tab in the window. See image below.

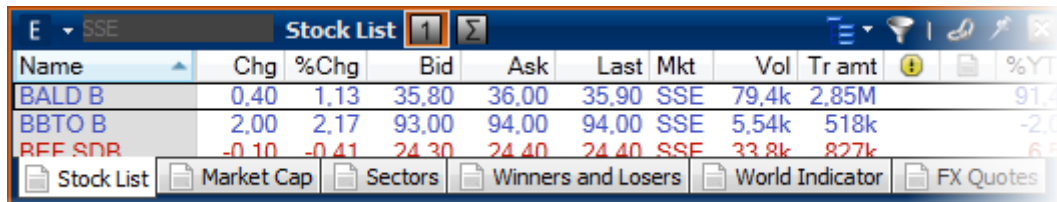


Select a tab name

Window that have been "docked" according to the "window-in-window" principle above, can also be assigned specific names.

This is done by right-clicking on the selected tab, and then selecting **Rename**.

In this way it is possible to create a multiple tab view with assigned names, as illustrated below.



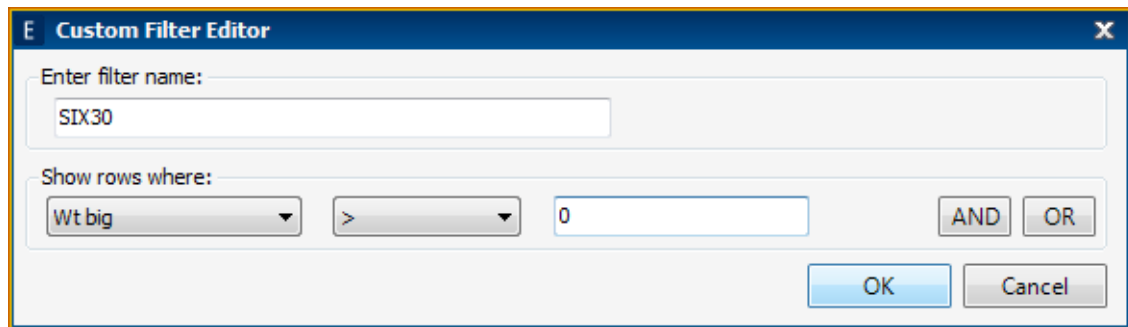
Pin and Always on Top

The pin icon that can be seen in each window places that window "in front of" all other windows in Edge. It means your window will be visible regardless of which other page you choose to open.

A further extension to this is the **Always on Top** feature, which is available if you after "pinning" a window, right click in the upper frame of the window, and select **Always on Top**. As a result, that window will be visible regardless of which other program you are using.

Filter

You can add a filter to a stock list by clicking the icon  in the window frame. The filter allows only the instruments that match the criteria you have set up to be displayed. For example, you can try to add a filter as shown below.



A list of the SIX30 companies is shown.



The filter function can also be used on a ticker list, for example to show only tickers above a certain amount, or with a specific actor as buyer or seller.

You can also combine the filter function with the window-in-window function for a convenient handling of lists with different content.

Chart templates

If you have a specific chart configuration that you want to use for different instruments without having to redo the settings for each instrument, you can save your settings as a template. Make your settings in a chart, right-click in the upper frame of the chart and select **Save As Template**. Name your configuration and click OK. Your template is now ready to use on the instrument at any time during the **Charts** menu under right-click in the stock list. The same method can be applied to any other view, not just charts. You can e.g. design your own trade ticker, with the columns arranged and visible the way you want, and filtering only trades above a certain amount.

Profit/loss in your own instrument list

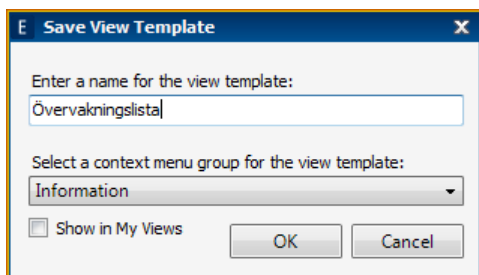
You can add the holdings and purchase value of the instruments to your instrument list. Open your own instrument list (see page 7). Click on the icon  and then on the icon  next to it. In the window that appears, click **Add** and enter your values. Exit with **OK** and **Close**.



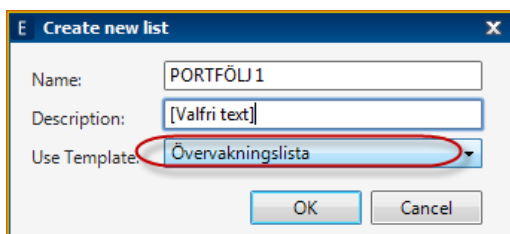
Save configuration of instrument lists

It is possible to save the configuration of own instrument lists by right-clicking in the column heading and then choose **Save as Template**. In this way, structures with selected columns are saved as a template with a specific name.

See picture on next page.




Please note that this template can be saved under a given group in the context menu. Saved list templates can then be selected via **Use Template**, when a new list is created.

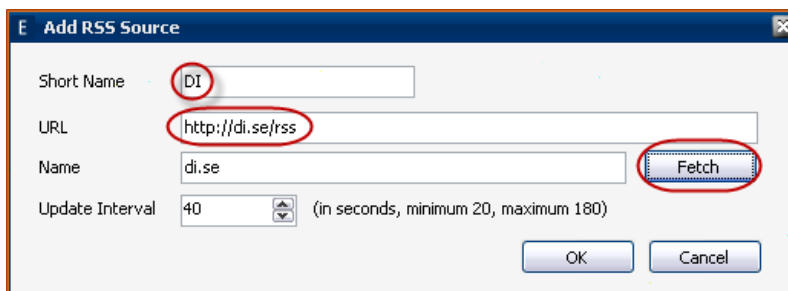


RSS news

RSS is a function that retrieves news headlines from sites on the Internet. News from the selected sources are presented in your news window in Edge. From these titles, you can open the articles on the various sites.

Open the website you want to retrieve news from. Look for the icon  or the acronym RSS (please note that this service is not available on all sites).

Copy the link the website refers to for download, for example <http://ditrader.di.se/News/rss.aspx> for news from di.se. Open **Settings** (see page 11), go to the **RSS** tab and choose **Add**. Enter the name you want to give your news source and paste the link. Click **Fetch** to verify the link. Exit with **OK**.



Tick the sources you want to download news from on the **RSS** tab under **Settings**. Now you can produce RSS news by typing the name of your source in the filter field in the news window.

Widgets

At the top right are four Widgets windows. These offer a clear view of selected instruments. By drag-and-drop instruments can be moved from for example as a stock list or an Index list directly to the selected window. Hold your mouse pointer over the right edge of your widget-window to reach the wrench, from which the settings of the selected window can be accessed. Through this function, it is possible to control the values that should appear for a chosen instrument, and to connect the clocks associated with the selected time zone.

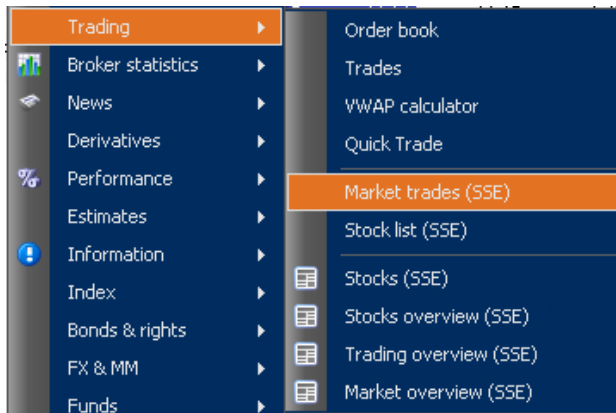


VWAP calculation of tickers

You can select a number of tickers in an instrument trade list by holding down Shift or Ctrl when clicking. When you roll over the area you can see the volume weighted average price, number of tickers and total volume of the marked tickers.

Tickers for a specific portfolio

To see tickers of a specific portfolio, open a ticker list for a whole market by right-click or through the library.

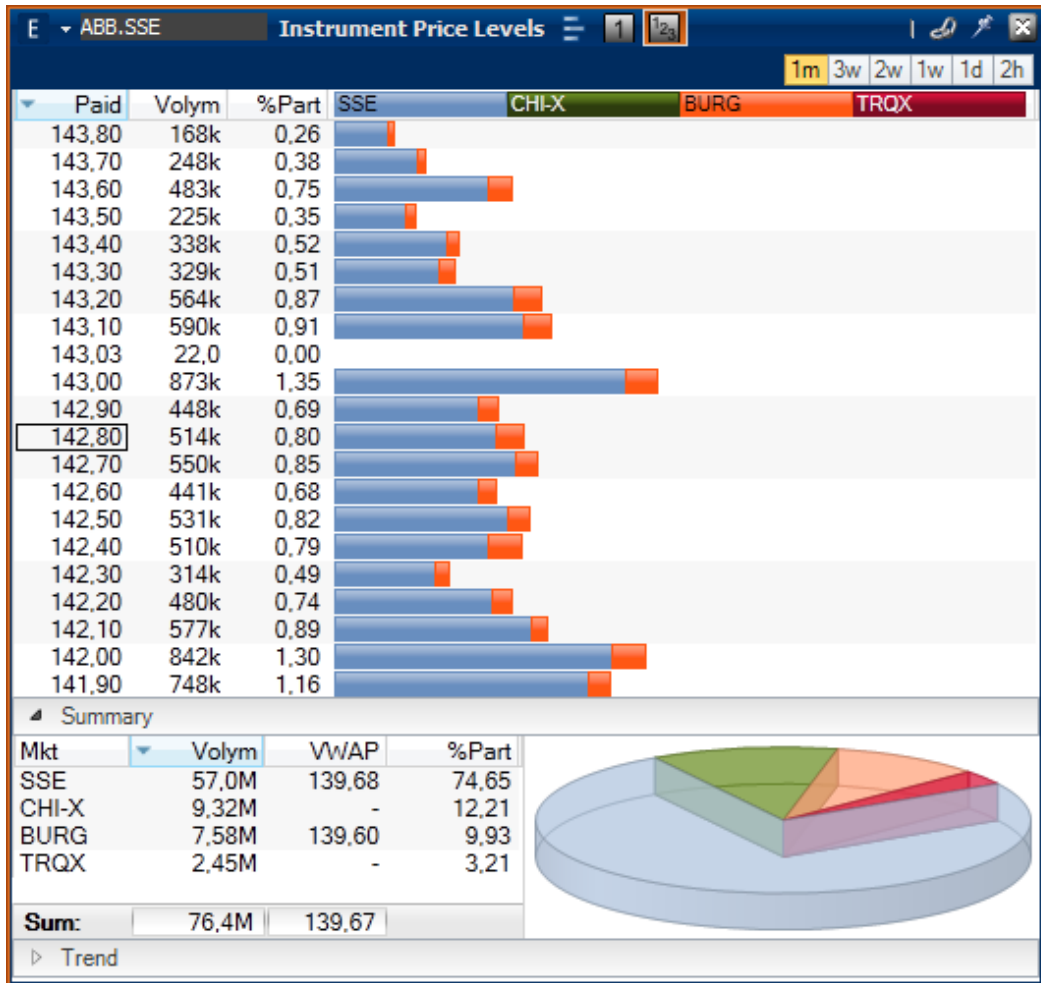


Type the name of your portfolio in the black field in the upper left corner, where the stock code can be found. See image below.

E OVERVAKNING Market Trades					
Id	Paid	Vol	Buyer	Seller	Txn time
HQ	7,00	2 014	NDS	AVA	16:20:54
G5EN	22,20	435	NON	AVA	16:20:54
HQ	7,00	1 228	NDS	SHB	16:20:53
NOKI-SEK	51,25	50	AVA	KEM	16:20:52
NOKI-SEK	51,25	50	AVA	KEM	16:20:52
NOKI-SEK	51,25	50	AVA	TMC	16:20:52

Instrument price level

This view shows an overview of the volume traded at specific price levels for the selected instrument. These prices can also be aggregated for the different markets and it is also possible to switch between the current survey and trend view.



You can access **Instrument price level** from the instrument context menu (right-click) and choose Trading/Instrument Price Levels, or from the **Library** -> [View Templates] -> **Trading information**.