

EDGE

a SIX Telekurs display

Quick guide Edge 3.4

Welcome to Edge 3.4!	2
The Edge 3.4 features in short	3
Release notes Edge 3.4	4-6
Main menu	7
Open a page	7
Bookmarks	8
Own lists	8
Pages	9
Alarms	9
Library	10
Search	10
Settings	11
Page construction	12
Building with a finished page as basis	12
Building a new page	13
Linking	13
Save a page	13
Right click...	14
...in a window	14
...in a column heading	15
...in a window frame	15
News	16
Charts	17
Time periods, tick length and zoom	17
Instrument specific settings	18
More chart tools	19
Advanced functions	20-26
Order entry	*** See separate guide

Welcome to Edge 3.4!

Edge is a modern and powerful trading terminal designed for professionals and active private investors. Edge gives you access to one of the most advanced and versatile information and trading applications, with access to real-time information and the best and fastest news providers with national and international news. Edge also gives you unique content - over 30 years of historical data, currencies, interest rate market, technical analysis, powerful graphs, detailed company information on Nordic companies as well as rapid and transparent estimates and earnings forecasts for the Nordic and European companies.

Edge offers a number of complete packages, which meet all requirements and outlines of front and middle office.



This guide will help you who get started and work with Edge. If you want to learn more about the content of Edge, SIX Telekurs provides training for single users or groups at no additional cost.

Please contact SIX Telekurs Customer Services if you have questions about the content of this document, or if you want to book a training course. Contact information can be found at the bottom of each page.

The Edge 3.4 functions in short

- Free floating windows make it easy to build new and modify existing pages.
- Page templates: The same page can be used for all markets.
- “Virtual markets”: Merge markets into one stock list.
- Extended history and instrument access. Up to 30 years of history on some instruments.
- Powerful and intuitive order placement – directly from order books, stock lists or news.
- Comprehensive content and in-depth company information (additional service).
- SIX Estimates provides early indications of trends and estimates where donors can compare their estimates to consensus (additional service).
- Inquiry Estimates. Nordic and European estimates of more than 650 companies, with detailed consensus broken down into division level and high-performance data.
- Infionals Corporate Focus: A powerful tool that offers comparisons of estimates, foundation data or indicators on more than 70 000 companies from around the world (additional service).
- Filter stock lists or closures.
- “Always on top”: Ability to allow certain windows always to be visible over other programs.
- Excel link both in real time and snapshot, available through drag-and-drop or through export of own portfolios or lists.
- Easy to share pages, lists and virtual markets to other Edge users with the Export/Import function.
- User-friendly and powerful chart tool with possibility to build own forms.

Release notes Edge 3.4

Key features

Hardware accelerated graphics

To reduce load on the CPU and improve performance Edge is able to let the graphics card (if available) manage the drawing of tables and views on the screen. This allows for a very high data output combined with early tests indicating a decrease in CPU load of approximately 50%. Edge will automatically detect if hardware acceleration is available and activate it. If not, the normal graphics management method is used.

Auto update

When a new Edge version is available for download a message will be shown on the screen. Upon accepting the update, Edge will download and install the new version. This feature is optional and can be disabled.

Aggregated Stock List

Depending on the information entitlements of the user, the stock list can aggregate prices from several markets on the same instrument. When expanded, the underlying instruments are shown with the full information available.

Order entry from news window

Place orders directly from news headlines or articles. With either +/- keys or with a click with the mouse an order entry panel is opened.

Other features

Calculated FX Forwards

In the FX Forwards view a check box has been added which calculates theoretical forward prices when no contributed prices are available.

FX Forwards outright prices

In the FX Forwards view, a check box has been added which converts the premiums/discounts to actual currency prices, or "outright".

FX Forwards price chart

When using outright prices a button appears in the FX Forwards header which shows the prices as a chart.

Bond trades, Derivatives Trades

In the Market Trades view a properties panel has been added where you can choose what instrument types to show.

Bar chart compression

In the sample rate drop down menu new options **Week**, **Month**, **Quarter** and **Year** are available.

Authenticated RSS	When adding an RSS source a panel where authentication details can be inserted is available.
Hidden scroll bars	The scroll bars in views are hidden until the cursor approaches them.
Adjustable row/column fixers	The row and column fixers are now adjustable from the column header menu.
Alternating row color	Alternating row colors in lists are available from the column header menu.
Friendly tab names	When using tabbed views it is now possible to set a custom tab name.
Sticky tabs	Holding down [Shift] is now required to remove a tab from a tabbed view (i.e. same as required for tabbing the views in the first place).
Related news	By right clicking in an article a number of related news filters are available. These are also shown at the bottom of the article view.
Sorting by two columns	Apart from just clicking on one column to sort, now by holding [Shift] a secondary column sorting is available.
Copy news to clipboard	An icon to copy a news article to the clipboard is added to the news article view header.
Copy to Excel from Estimates and Company Information	RTD links are enabled for the Estimates Details views. Also, copying data from Company Information views is enabled, although these will not be RTD links.
 New views	
Caps & Floors	An interest rates derivatives view named CapsFloors has been added. Available either in the Library under <i>Views -> [Market] -> Fixed Income and Money Markets</i> or under <i>View templates -> Treasury</i> .
Swaptions	An interest rates derivatives view named Swaptions has been added. Available either in the Library under <i>Views -> [Market] -> Fixed Income and Money Markets</i> or under <i>View templates -> Treasury</i> .

Instrument Price Levels

A view showing an overview over at what prices trades have been made. Prices can be aggregated across the markets the user is entitled for. Also at the bottom are two fragmentation panels: One current overview and one trend panel.

New pages**Stocks**

The page Stocks has been modified to include more information in tabbed views.

Treasury SE/DK IRD

New treasury pages focusing on Interest Rates Derivatives for the Swedish and Danish markets have been added.

Main menu

In the main menu at the top list, you can find tools for building pages, portfolios, bookmarks, instrument search and settings.



At the top left of the main menu, you can find the “Top View”. Here you can see which page and market that is currently showing. In this case, the page **Stocks** is receiving data from the Stockholm Stock Exchange (**SSE**).



Open a page

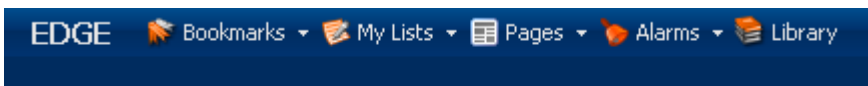
Click in the box at the top left that says **SSE:Stocks**. For example, write **CSE** and press [Enter] once. A list of available pages for the Copenhagen Stock Exchange will open up. Press [Enter] again when Stocks is marked.

A new tab will open up with a page similar to **SSE:Stocks**, but data is now delivered by the Copenhagen Stock Exchange. You can tell by the text **CSE:Stocks** on the new opened tab at the top list of your page.



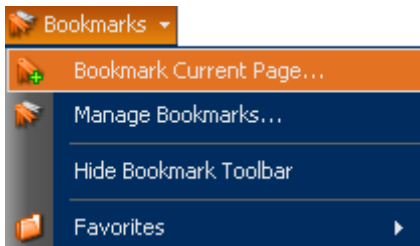
Overview

In the middle of the main menu are five menus with the most common functions: **Bookmarks, My Lists, Pages, Alarms and Library**.



Bookmarks

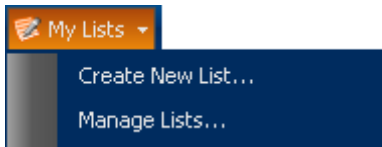
Bookmark your most common pages to be able to recover them quickly. Link one of the F keys to the bookmarks for simple managing. Your bookmarks will appear in the list under *Top View*.



When you select **Bookmark Current Page**, a box will appear where you can choose where to place your bookmark. Click **Favourites** to select the right folder and press OK. Your bookmark will now be visible in the main menu. You can also drag and drop an active page to the list of bookmarks.

Own lists

Create your own instrument lists with instruments such as customer portfolios, own holdings or interest indicators and indices. When you create a new list, a blank new window opens up. Now, just drag and drop the instrument you want included into the list. If you cannot find an instrument you want included, you can search for it by clicking the icon in the same window.



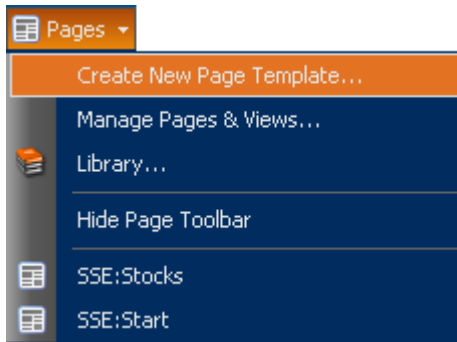
When you have created your list, you can always find it under this menu.

In your instrument lists, you can also switch over to a bar chart. Open your own instrument list (see page 7). Click on the icon . In the drop-down menu to the left, you can choose the variable you wish to sort the instruments by.



Pages

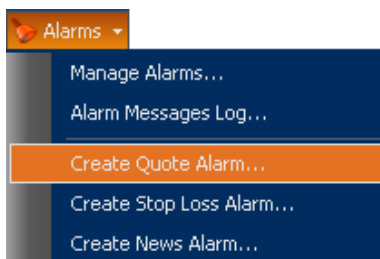
This menu allows you to create a whole new page. By choosing **Create New Page Template**, you create a page template that you can later use on any market. Compare with the example above where the **Stocks** template is applied to both the Stockholm and Copenhagen Stock Exchange.



A more detailed description of how to build a page can be found on page 10 below.

Alarms

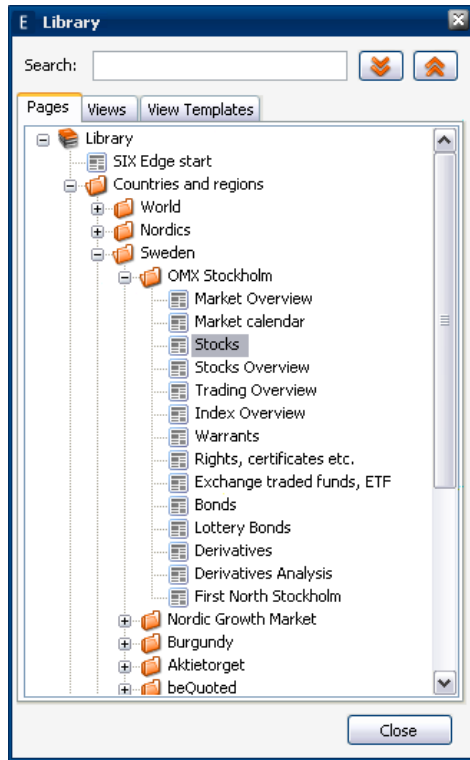
Under the alarms menu, in addition to setting stock quote alarms, stop-loss alarm, news alerts, and open a log of triggered alarms, you can organize the alarms in the **Manage Alarms** menu. It is also possible to add a free text that is displayed when the alarm goes off, and connect specific sounds to specific alarms.



Library

[Ctrl + L]

The library contains all finished page templates divided into respective market. You can always go to the Library to find a page if you are unsure of how to use the **Top View** to find pages. You can open individual windows divided by market – for example one stock list for the Stockholm Stock Exchange. You can also download blank windows that have no predefined information content.



Pages

Finished pages divided by market.

Views

Individual windows with predefined content presented by market.

View Templates

Individual windows without predefined content.

Other functions

To the right of the main menu, aside from a field for instrument search, you can also find settings, support information and login to the order function (additional function).


Search

[Ctrl +F]

In the search field, you can search all the instruments of the SIX Telekurs database. You can search by ticker, name, ISIN or various abbreviations. A new feature in Edge it that you through this have access to historical closing prices on all instruments – even those not included in your subscription. History has been extended up to 30 years.

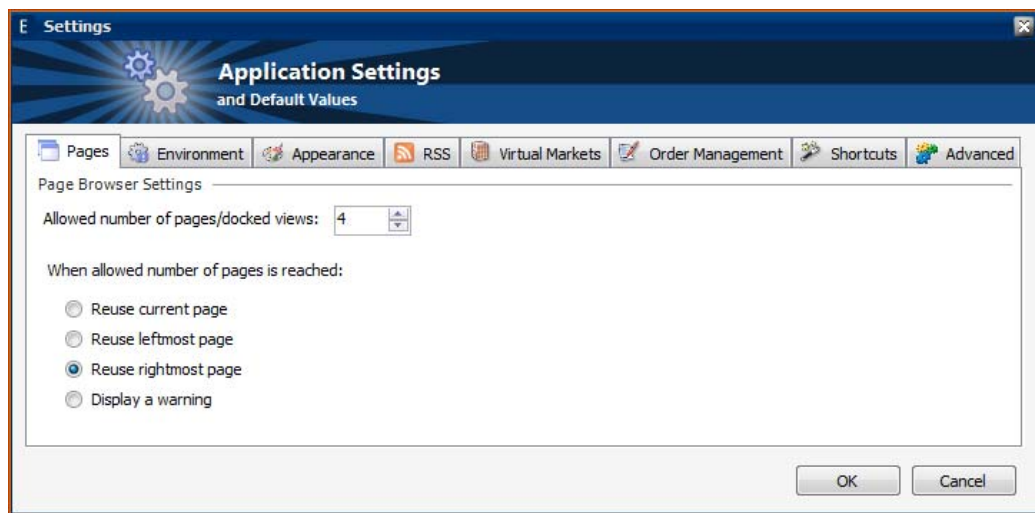


Settings

Settings can be reached by using this icon. 

In the settings box, you can do the following:

- **Pages:** Set the number of pages (tabs) that can be open parallelly.
- **Environment:** Server addresses (not changed), and change password.
- **Appearance:** Colour settings, font and font size.
- **RSS:** News download from Internet sources. See the **Advanced Features** section on p. 19.
- **Virtual Markets:** Merge marketplaces and stock exchanges in the same stock list – a so called "virtual market". See the **Advanced Features** section on p. 19.
- **Order Management:** Order settings. Server settings, limits, alarms etc (*additional function*).
- **Shortcuts:** Settings for double clicks and keyboard shortcuts.
- **Advanced:** Setting for CPU acceleration and AntiAliasing for all text.




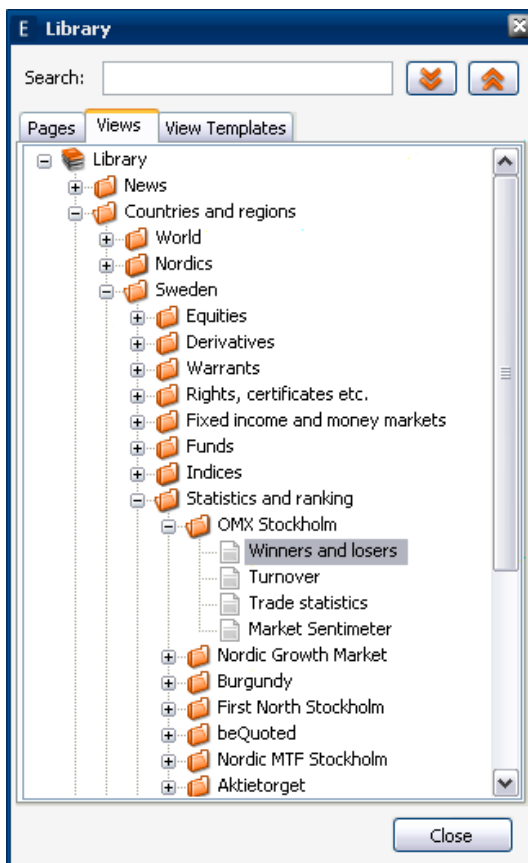
Page construction

The work space in Edge 3.4 consists of pages with free floating windows with "magnetic" edges that easily attach to each other. This makes it easy to expand an existing page – either open up the windows you want to use through the library or access them by right-click and place them as you wish.


Once you have built your page, you can save it as a template and use it to work on all markets. See the section "Saving a page" below.

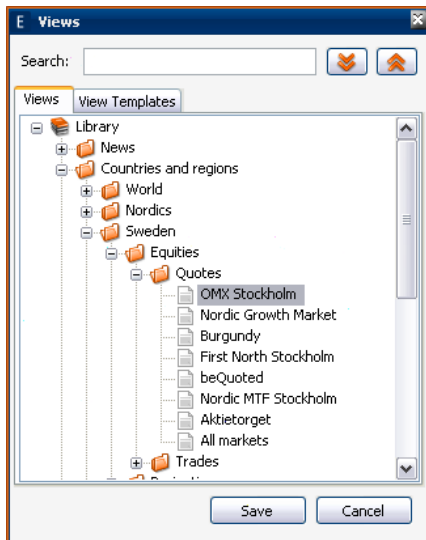
Building with a finished page as basis

If you want to use one of the finished pages as basis for your own page, click the icon  in the main menu. Click the **Views** tab in the window that opens up, and then click on the link to the window you want to open. In the image below, a Winner/Loser-list for the Stockholm Stock Exchange opens up. Additional items to your page can be found under the **View Templates** tab. Learn more about linking and how to save pages on the next page.



Building a new page

If you want to build a page from scratch, click the icon  in the main menu and select **Create New Page Template**. A box from the library will open up where you can start selecting the content of your page.



Aside from this, the page construction works in the same way as in the case above, when you continue building an existing page.

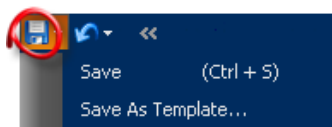
Linking

Link your new windows with for example the stock list by clicking the link icon at the top bar of the new window. Choose for example **SSE: Stock List**. You can see which window you have linked to when its top bar turns orange.



Saving a page

When the new windows have been set and interconnected, click the **Save** icon at the top of the main menu. In the new menu that opens up, select **Save As Template**, and name the new page.



If you choose the option **Save** in this menu, your change will be saved *for this market only*. This can be useful if for example different order books should be open in different markets.






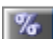







Right-click...

Throughout Edge, you can work with right-click. Each window contains settings or additional information that you will access through right-click. You can choose your settings by right-clicking in the frames of the different windows on your page. Read more about this below.

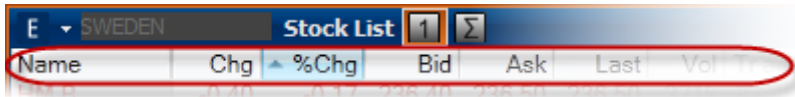
...in a window

If you right-click on an instrument for example in the stock list, a menu will open up that gives you access to almost all information available in Edge. This information is available at both on company and market level. Here you have access to various methods for watching and handling market information, own pages, alarms, own instrument lists and table settings and features.

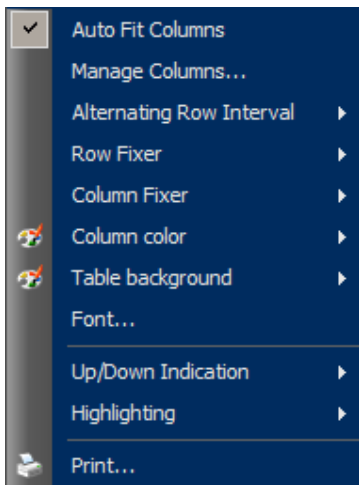
See below for a presentation of the most common alternatives under right-click.

 Chart	Here are a number of out-cut analysis and applicable formulas.
 Trading	Order books, closing tickers, VWAP, Own closures and market closures.
 Broker statistics	Market statistics and broker statistics.
 News	Company specific news.
 Derivatives	Options, option simulator and warrants.
 Performance	Stock quote development, turnover on selected market, winners/losers.
 Estimates	Inquiry Estimates, SIX Estimates for quarter and year..
 Information	Infionals Corporate Focus, SIX Company Information.
 Index	Market index, sector members, index scale.
 Bonds & rights	Bonds, premium bonds, warrants and convertible bonds.
 FX & MM	Currency quotes, currency index, interest rates.
 Funds	Funds and EFT – Funds.
 International	World indicator. .

Please note that most of the window you open by right click in the stock list can be inserted and saved into your site. See the previous section **Page construction** for more information regarding this.

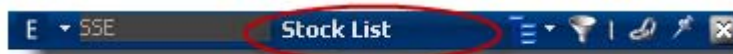
... in a column heading

Right-clicking on any column heading in one instrument or stock list (see above), allows you to access the following menu, which can be used to change the color, appearance, or present which columns should be available, and in what order they will be illustrated.



Through **Manage Columns...** visible columns and the order of them is changed.


Column color and **Table background** provide functions to change the color grading and color scheme in selected shares or instruments list.

...in a window frame

If you right-click in a frame, you can among other things open a copy of the existing window (**Duplicate**), set a font, save your list settings as a template in the library, and export to Excel. You can also reset default settings through the **Restore defaults** option.

News

As a default setting, all news sources you have access to are shown in the news window. It is possible to filter the news feed via the black bar at the top left of the news window.

Click in the black bar and write for example the ticker code for a company to filter the news for that specific company. You can add several filters, such as news sources, topics or sectors. A list of possible filters is available under the icon . In the image below, a filter is set to display news from SIX Newswire.



In the News window, there is a calendar to search for historical news. It can easily be reached by writing **Calender** in the text bar. Other examples of filters are **Macro** for relevant Macro news, **Estimates** for SIX Estimates mailings regarding estimates data, and **Flash** to pick out flash news and result flashes.

Charts

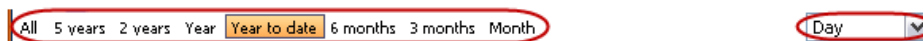
Edge has a powerful and flexible chart tool, where you easily can make comparisons between instruments, apply technical methods, draw or see news or report dates. You can make simple comparisons between instruments by dragging and dropping them into the graph.

In the image below, four areas in the chart are marked with red. There you will find settings or menus for working with the chart tool.



Time periods, tick length and zoom

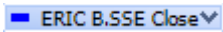
At the bottom of the chart, there are a number of predetermined time periods. They vary depending on which tick length that has been selected in the scroll menu to the right. The menu lets you switch between intraday and historical charts by changing the tick length to for example Tick or Minute. You can also select a longer update periods, such as Month or Year, to get a proper refresh rate for hours on graphs of 30 years or more.



Zoom to specific periods in the chart by holding the left mouse button down while measuring out the time period you are interested in. You can see the dates at the lower edge when you roll over the graph.

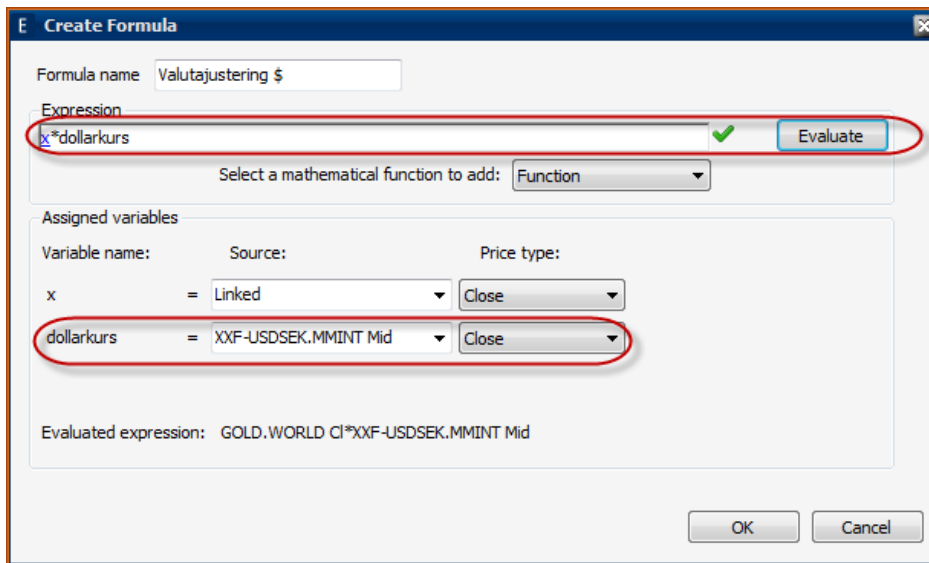
Instrument specific settings

Each instrument shown in the chart has its own menu where you can change colours, chart type and additional information on the instrument such as reports, highest/lowest rates etc.



Please note the option **Scale mode**. There you can choose whether the scale should be logarithmic or if you want the instrument in conjunction *not* be indexed against each other with the **Linear** option.

The option Formulas allows you to create your own calculations based on the time series of Edge. Write your expression in the Expression field and press Evaluate. You can then assign the instrument to your variables either by dragging and dropping from the tables in Edge to the Source field, or search by typing the name of the instrument in that field.



In this case, the variable x is linked to the main instrument in the graph so that the formula can be applied to other instruments. The results are presented as a new time series in the graph. This can be moved to a new panel through the menu option **Move to new panel**.

More chart tools

The top of the chart displays a list with instrument information. Behind it is a menu with more tools to work with the chart. They appear if you move the mouse pointer upwards on the chart.



Search instruments to add to the chart.



Advanced settings to determine how the information should be presented.



Draw trend lines with alarms that go off if the chart crosses the line. *(Opens a new menu of options at the top of the chart.)*



Drawing tools for technical analysis. *(Opens a new menu of options at the top of the chart.)*



Resets advanced settings.



Switch chart content to table mode for exports to Excel, for example.



Print the chart.



Preview the printout.



Link the chart to one or more instrument lists.

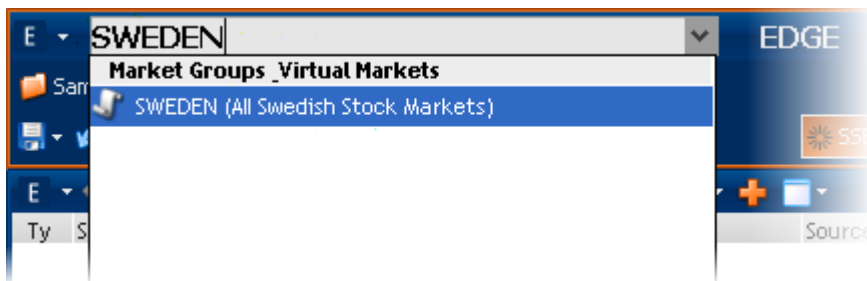
Advanced functions

This section is intended to demonstrate a number of useful functions for you who wish to utilize the full capacity and flexibility of Edge 3.4.

Virtual markets


In Edge you can merge various market places into one stock list. This will give you instant access to all the instruments from the selected market places added to the stock list.

There is a predefined virtual market that includes the Swedish stock exchanges. You can access it by writing **SWEDEN** in the Top View field. (See page 7.)



You can create your own virtual market by going to **Settings** (see page 11) and clicking **Add** under the **Virtual Markets** tab. Give your market a name and a description. Tick the markets you want to include and click OK. Access your virtual market in the same way as the market **SWEDEN** above.

Aggregated stock lists

In Edge, it is possible to aggregate prices from different markets in a single stock list. It is also possible to expand the underlying instrument to obtain bid and ask prices from all markets. This offers an unprecedented overview of how the individual instruments are traded on a large number of markets simultaneously. To view an aggregated stock list, click the icon  in the stock list.

See below how the aggregated stocks list is illustrated in Edge.

Name	Chg	%Chg	Bid	Ask	Last	Mkt
▶ AAK*	-0,33...	-0,19	177,50	178,50	178,00	BURG
▲ ABB*	4,075	2,93	143,00	143,20	143,10	BURG
ABB	4,30	3,10	143,00	143,20	143,20	SSE
ABB	4,00	2,88	143,00	143,20	143,10	TRQX
ABB	4,00	2,88	143,00	143,20	143,10	CHI-X
ABB SEK	4,20	3,02	143,00	143,20	143,20	BURG
▶ ACAN B*	-0,075	-0,64	11,70	11,75	11,70	BURG
▶ ACAP A*	-	-	50,00	55,00	-	BURG

Window-in-window (*Docking*)

In order to save space while keeping related information together, you can dock various objects such as instrument lists, order books or charts to each other in a window. Press [Shift] while holding down the left mouse button and drag a window over another. An icon will appear in the middle of the window. Roll your mouse over the icon and release the mouse button to add the item as a tab in the window. See image below.

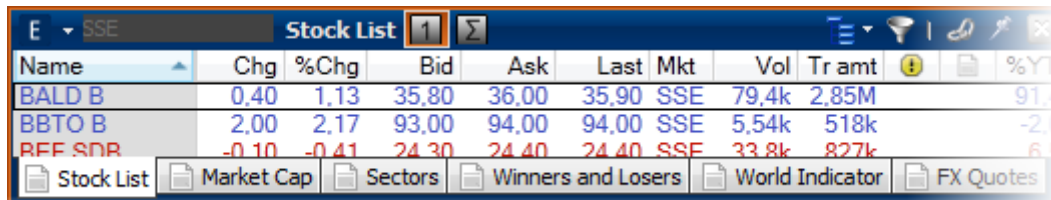


Select a tab name


Window that have been "docked" according to the "window-in-window" principle above, can also be assigned specific names.

This is done by right-clicking on the selected tab, and then selecting **Rename**.

In this way it is possible to create a multiple tab view with assigned names, as illustrated below.



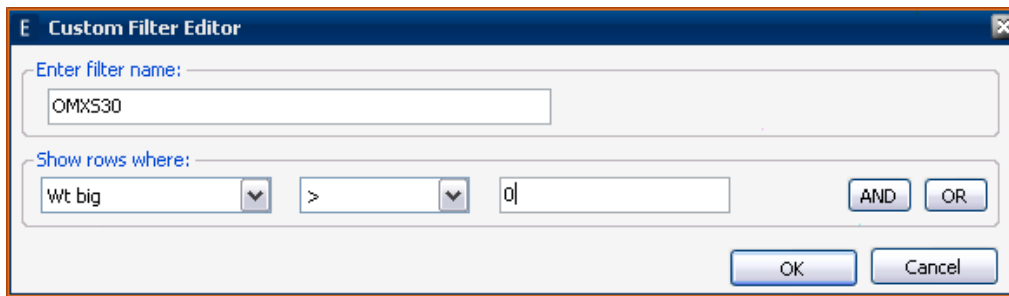
Pin and Always on Top

The pin icon  that can be seen in each window places that window "in front of" all other windows in Edge. It means your window will be visible regardless of which other page you choose to open.

A further development of this is the **Always on Top** feature, which is available if you after "pinning" a window, right click in the upper frame of the window, and select **Always on Top**. As a result, that window will be visible regardless of which other program you are using.

Filter

You can add a filter to a stock list by clicking the icon in the window frame. The filter allows only the instruments that match the criteria you have set up to be displayed. For example, you can try to add a filter as shown below.



A list of the OMXS30 companies is shown.

The filter function can also be used on a ticker list, for example to show only tickers above a certain amount, or with a specific actor as buyer or seller.

You can also combine the filter function with the window-in-window function for a convenient handling of lists with different content.

Chart templates

If you have a specific chart configuration that you want to use for different instruments without having to redo the settings for each instrument, you can save your settings as a template. Make your settings in a chart, right-click in the upper frame of the chart and select **Save As Template**. Name your configuration and click OK. Your template is now ready to use on the instrument at any time during the **Charts** menu under right-click in the stock list.


Profit/loss in your own instrument list

You can add the holdings and acquisition value of the instruments to your instrument list. Open your own instrument list (see page 7). Click on the icon and then on the icon next to it. In the window that appears, click **Add** and enter your values. Exit with **OK** and **Close**.



RSS news

RSS is a function that retrieves news headlines from sites on the Internet. News from the selected sources are presented in your news window in Edge. From these titles, you can open the articles on the various sites.

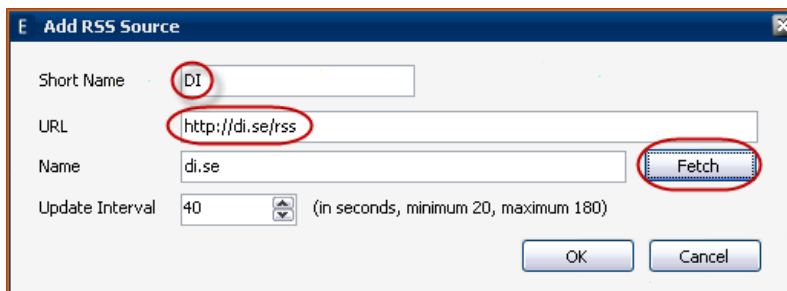
Open the website you want to retrieve news from. Look for the icon  or the acronym RSS (please note that this service is not available on all sites).

Copy the link the website refers to for download, for example

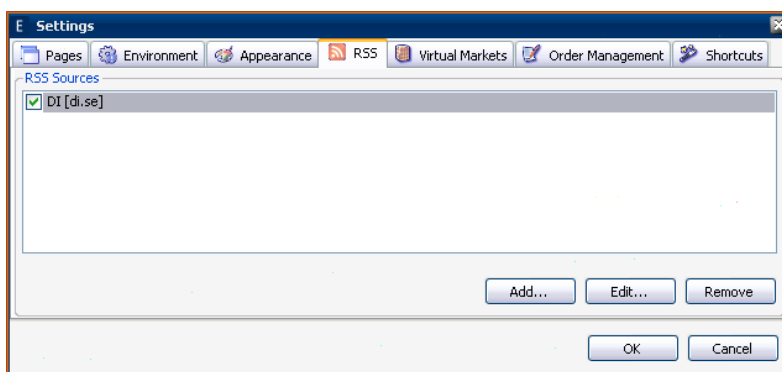
<http://ditrader.di.se/News/rss.aspx>

for news from di.se. Open **Settings** (see page 11), go to the **RSS** tab and choose **Add**.

Enter the name you want to give your news source and paste the link. Click **Fetch** to verify the link. Exit with OK.



Tick the sources you want to download news from on the **RSS** tab under **Settings**.



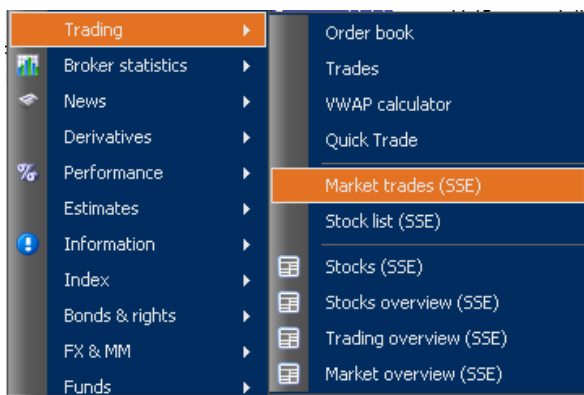
Now you can produce RSS news by typing the name of your source in the filter field in the news window.

VWAP calculation of tickers

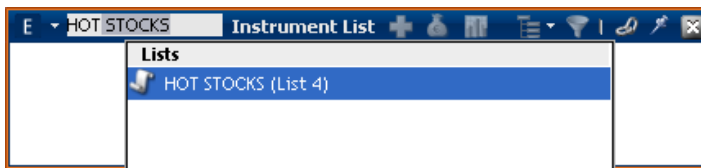
You can select a number of tickers in a ticker list by holding down Shift or Ctrl when clicking. When you roll over the area you can see the volume weighted average price, number of tickers and total volume of the marked tickers.

Tickers for a specific portfolio

To see tickers of a specific portfolio, open a ticker list for a whole market by right-click or through the library.

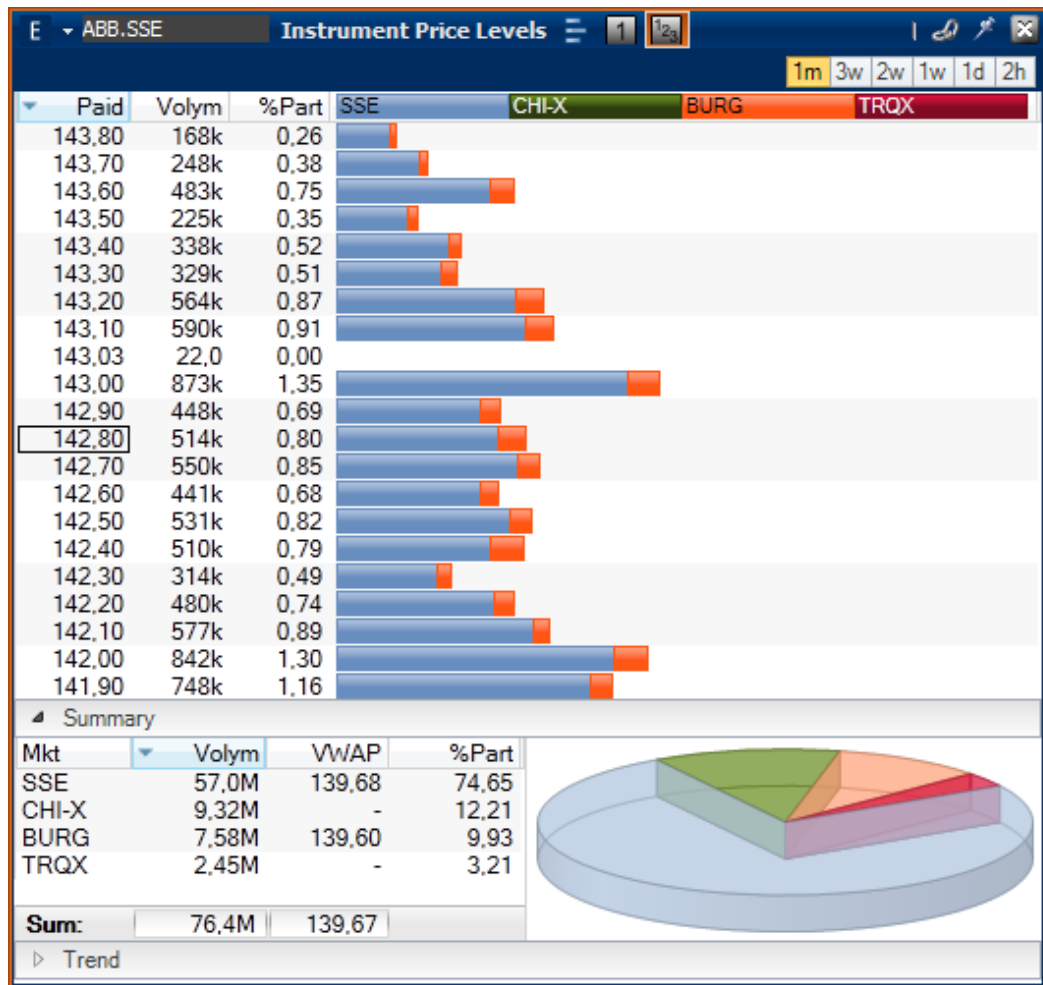


Type the name of your portfolio in the black field in the upper left corner, where the stock code can be found. See image below.



Instrument price level

This view shows an overview of the different price levels to which a closure has taken place for a particular share. These prices can also be aggregated for the different markets and it is also possible to switch between the current survey and trend view.

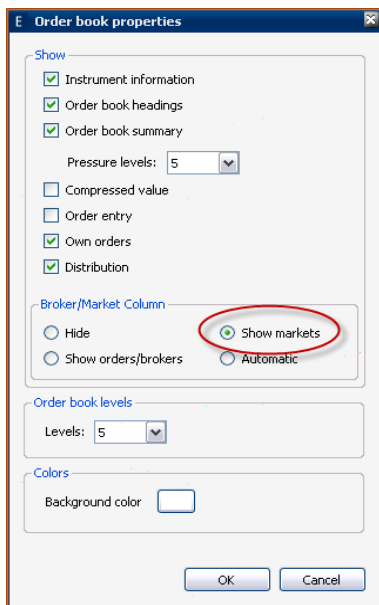


You will find **Instrument price level** under **Library** -> [View Templates] -> **Trading information**.

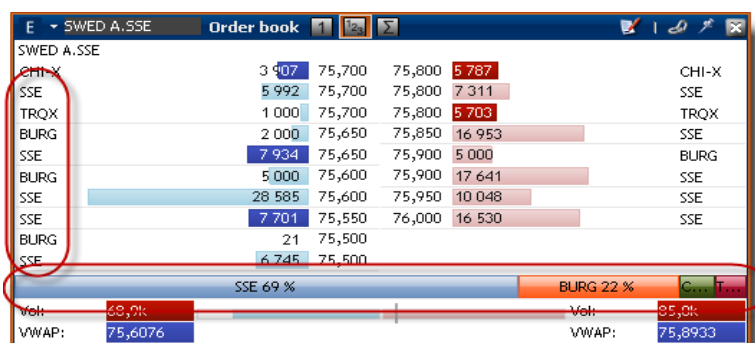
Aggregated order book

For instruments traded in different markets, you can get the volumes for the different markets in one single order book, given that it is the *same instrument* and that the currency is the same. There are various options in the order book on how to present this. (See next page.)

To see volumes in the different markets, right-click in the order book, and select **Properties**. In the box that opens up, tick the box **Show markets**.



Use the three icons at the top of the order book to choose between **Simple**, **Consolidated** or **Aggregated** order book. In the image below, the consolidated order book has been selected. The volumes for each price level on each market are now displayed next to each other in the order book.



Consolidated and aggregated order books also show order book volume seen from the various trading sites. In this case, 69% of visible orders submitted via the Nasdaq OMX (SSE), 22% are arranged through Burgundy, and so on.